

00325

THIS DRAWING IS THE PROPERTY OF THE SIGNAL CORPS ENGINEERING LABORATORIES... FOR INFORMATION ONLY. CONTRACTOR MAY AT HIS OPTION DEVIATE FROM THESE PROCESS DETAILS.

FOR INFORMATION ONLY. CONTRACTOR MAY AT HIS OPTION DEVIATE FROM THESE PROCESS DETAILS.

FOR INFORMATION ONLY. CONTRACTOR MAY AT HIS OPTION DEVIATE FROM THESE PROCESS DETAILS.

*WHEN PART NUMBER APPEARS AS 1-538-0463-025 LESS (25), (34), (35), (36), (37), (40), (42), (43), (44), (45), (46), (47), (48), (49), (50), (51), (52), (53), (54), (55), (56), (57), (58), (59), (60), (61), (62), (63), (64), (65), (66), (67), (68), (69), (70), (71), (72), (73), (74), (75), (76), (77), (78), (79), (80), (81), (82), (83), (84), (85), (86), (87), (88), (89), (90), (91), (92), (93), (94), (95), (96), (97), (98), (99), (100), (101), (102), (103), (104), (105), (106), (107), (108), (109), (110), (111), (112), (113), (114), (115), (116), (117), (118), (119), (120), (121), (122), (123), (124), (125), (126), (127), (128), (129), (130), (131), (132), (133), (134), (135), (136), (137), (138), (139), (140), (141), (142), (143), (144), (145), (146), (147), (148), (149), (150), (151), (152), (153), (154), (155), (156), (157), (158), (159), (160), (161), (162), (163), (164), (165), (166), (167), (168), (169), (170), (171), (172), (173), (174), (175), (176), (177), (178), (179), (180), (181), (182), (183), (184), (185), (186), (187), (188), (189), (190), (191), (192), (193), (194), (195), (196), (197), (198), (199), (200), (201), (202), (203), (204), (205), (206), (207), (208), (209), (210), (211), (212), (213), (214), (215), (216), (217), (218), (219), (220), (221), (222), (223), (224), (225), (226), (227), (228), (229), (230), (231), (232), (233), (234), (235), (236), (237), (238), (239), (240), (241), (242), (243), (244), (245), (246), (247), (248), (249), (250), (251), (252), (253), (254), (255), (256), (257), (258), (259), (260), (261), (262), (263), (264), (265), (266), (267), (268), (269), (270), (271), (272), (273), (274), (275), (276), (277), (278), (279), (280), (281), (282), (283), (284), (285), (286), (287), (288), (289), (290), (291), (292), (293), (294), (295), (296), (297), (298), (299), (300), (301), (302), (303), (304), (305), (306), (307), (308), (309), (310), (311), (312), (313), (314), (315), (316), (317), (318), (319), (320), (321), (322), (323), (324), (325), (326), (327), (328), (329), (330), (331), (332), (333), (334), (335), (336), (337), (338), (339), (340), (341), (342), (343), (344), (345), (346), (347), (348), (349), (350), (351), (352), (353), (354), (355), (356), (357), (358), (359), (360), (361), (362), (363), (364), (365), (366), (367), (368), (369), (370), (371), (372), (373), (374), (375), (376), (377), (378), (379), (380), (381), (382), (383), (384), (385), (386), (387), (388), (389), (390), (391), (392), (393), (394), (395), (396), (397), (398), (399), (400), (401), (402), (403), (404), (405), (406), (407), (408), (409), (410), (411), (412), (413), (414), (415), (416), (417), (418), (419), (420), (421), (422), (423), (424), (425), (426), (427), (428), (429), (430), (431), (432), (433), (434), (435), (436), (437), (438), (439), (440), (441), (442), (443), (444), (445), (446), (447), (448), (449), (450), (451), (452), (453), (454), (455), (456), (457), (458), (459), (460), (461), (462), (463), (464), (465), (466), (467), (468), (469), (470), (471), (472), (473), (474), (475), (476), (477), (478), (479), (480), (481), (482), (483), (484), (485), (486), (487), (488), (489), (490), (491), (492), (493), (494), (495), (496), (497), (498), (499), (500), (501), (502), (503), (504), (505), (506), (507), (508), (509), (510), (511), (512), (513), (514), (515), (516), (517), (518), (519), (520), (521), (522), (523), (524), (525), (526), (527), (528), (529), (530), (531), (532), (533), (534), (535), (536), (537), (538), (539), (540), (541), (542), (543), (544), (545), (546), (547), (548), (549), (550), (551), (552), (553), (554), (555), (556), (557), (558), (559), (560), (561), (562), (563), (564), (565), (566), (567), (568), (569), (570), (571), (572), (573), (574), (575), (576), (577), (578), (579), (580), (581), (582), (583), (584), (585), (586), (587), (588), (589), (590), (591), (592), (593), (594), (595), (596), (597), (598), (599), (600), (601), (602), (603), (604), (605), (606), (607), (608), (609), (610), (611), (612), (613), (614), (615), (616), (617), (618), (619), (620), (621), (622), (623), (624), (625), (626), (627), (628), (629), (630), (631), (632), (633), (634), (635), (636), (637), (638), (639), (640), (641), (642), (643), (644), (645), (646), (647), (648), (649), (650), (651), (652), (653), (654), (655), (656), (657), (658), (659), (660), (661), (662), (663), (664), (665), (666), (667), (668), (669), (670), (671), (672), (673), (674), (675), (676), (677), (678), (679), (680), (681), (682), (683), (684), (685), (686), (687), (688), (689), (690), (691), (692), (693), (694), (695), (696), (697), (698), (699), (700), (701), (702), (703), (704), (705), (706), (707), (708), (709), (710), (711), (712), (713), (714), (715), (716), (717), (718), (719), (720), (721), (722), (723), (724), (725), (726), (727), (728), (729), (730), (731), (732), (733), (734), (735), (736), (737), (738), (739), (740), (741), (742), (743), (744), (745), (746), (747), (748), (749), (750), (751), (752), (753), (754), (755), (756), (757), (758), (759), (760), (761), (762), (763), (764), (765), (766), (767), (768), (769), (770), (771), (772), (773), (774), (775), (776), (777), (778), (779), (780), (781), (782), (783), (784), (785), (786), (787), (788), (789), (790), (791), (792), (793), (794), (795), (796), (797), (798), (799), (800), (801), (802), (803), (804), (805), (806), (807), (808), (809), (810), (811), (812), (813), (814), (815), (816), (817), (818), (819), (820), (821), (822), (823), (824), (825), (826), (827), (828), (829), (830), (831), (832), (833), (834), (835), (836), (837), (838), (839), (840), (841), (842), (843), (844), (845), (846), (847), (848), (849), (850), (851), (852), (853), (854), (855), (856), (857), (858), (859), (860), (861), (862), (863), (864), (865), (866), (867), (868), (869), (870), (871), (872), (873), (874), (875), (876), (877), (878), (879), (880), (881), (882), (883), (884), (885), (886), (887), (888), (889), (890), (891), (892), (893), (894), (895), (896), (897), (898), (899), (900), (901), (902), (903), (904), (905), (906), (907), (908), (909), (910), (911), (912), (913), (914), (915), (916), (917), (918), (919), (920), (921), (922), (923), (924), (925), (926), (927), (928), (929), (930), (931), (932), (933), (934), (935), (936), (937), (938), (939), (940), (941), (942), (943), (944), (945), (946), (947), (948), (949), (950), (951), (952), (953), (954), (955), (956), (957), (958), (959), (960), (961), (962), (963), (964), (965), (966), (967), (968), (969), (970), (971), (972), (973), (974), (975), (976), (977), (978), (979), (980), (981), (982), (983), (984), (985), (986), (987), (988), (989), (990), (991), (992), (993), (994), (995), (996), (997), (998), (999), (1000).

REVISIONS table with columns: BY, DESCRIPTION, DATE, APPROVAL

- NOTES: 1. APPLY A THIN COAT OF GREASE (54), PER SPEC MIL-G-7421, TO ALL TEETH... 2. COAT RUBBER STAMPING WITH VARNISH (53), PER SPEC MIL-V-173, TYPE I... 3. LIQUID STAKE WHERE INDICATED USING VARNISH (52) NO. 7526, BLUE AS SUPPLIED BY GENERAL ELECTRIC CORP. SCENECTADY, NEW YORK OR EQUAL... 4. NUT, 6-32 NC-2B x 1/4 HEX x 3/32 THK, DOUBLE CHAMFERED AS SUPPLIED BY CENTRAL SCREW CO., CHICAGO ILLINOIS OR EQUAL... 5. PART MAY BE SUPPLIED BY RADIO CORPORATION OF AMERICA, NEW YORK, N.Y. OR EQUAL... 6. WIRE, TYPE S, DRAWN & ANNEALED TH COATED... 7. FASTENER SEMS TYPE 4-40 NC-2A, x 1/4 LG, EXTERNAL TOOTH LOCK WASHER & PHILLIPS RECESSED PAN HD SCREW. FINISH: E300 PER SPEC MIL-F-14072... 8. CLAMPS TO BE TIGHTENED AFTER SHAFT (8) IS ASSEMBLED & UNIT (4) IS ALIGNED... 9. SWITCH SHAFT MUST SLIDE FREELY INTO SWITCH SHAFT SLEEVE AFTER SWITCH NUTS HAVE BEEN TIGHTENED. SOLDER BUSS WIRE (45) AFTER NUTS ARE TIGHTENED, ALL SFT SOLDER PER SPEC MIL-S-6872 USING ROSIN CORE SOLDER PER SPEC QQ-5-571, COMP SN-60... 10. REMOVE POST SM-B-248860 (33) ON TRAIN ASSY SM-D-248975 (7) BEFORE FINAL ASSY... 11. CRYSTAL OSC. MAY BE SET TO THE SAME FREQ. AS THE MEGACYCLE COUNTER READING... 12. NOTCH IN ROTORS ARE TO BE ALIGNED ON ALL SWITCHES BEFORE ASSEMBLING SHAFT... 13. FINISH: P213 PER SPEC MIL-F-14072. FINAL PRINT FILM NO. 1445, GLOSS ENAMEL PER SPEC TT-C-595 TO MEET THE APPLICABLE REQUIREMENTS OF SPEC MIL-F-14072. PAINT THE ENTIRE HEAD (EXCLUDING UNDERSIDE) *COLLINS 300-0055-00... 14. IN ALL SPLIT BALLOONS TOP FIGURE IS MATERIAL LIST ITEM INDICATOR & BOTTOM FIGURE IS QUANTITY... 15. 6-32 NC-2A x .259, 289 HX HD Y. 28967 THK X .576 LG. FINISH: PLAIN... 16. DIMENSIONS SHOWN ON THIS DRAWING DEFINE LIMITS FOR INTERCHANGEABILITY GAGING AND ARE TO BE USED AS A BASIS FOR ACCEPTANCE OR REJECTION OF THE COMPLETED ASSEMBLY... 17. SPRING ITEM (37) TO ENGAGE SLOTS IN ALL SWITCH ROTORS, TIGHTEN SCREWS ITEM (58) TO PREVENT BACKLASH BETWEEN SHAFT ITEM (8) & SWITCH ROTORS... 18. ASSEMBLY SHALL BE WIRED IN ACCORDANCE WITH WIRING ASSY SMC-2-49101 TO REFLECT THE CIRCUIT SHOWN ON SCHEMATIC DIAGRAM SM-U-2-49150.

Main parts list table with columns: QTY, PART NO., DESCRIPTION, MATL, MATL SPEC, NOTES

LIST OF MATERIAL table with columns: QTY, PART NO., DESCRIPTION, MATL, MATL SPEC, NOTES

Engineering drawing header/footer containing: DRAWN ECS, CHECKED RE, APPROVED, SIGNAL CORPS, DEPARTMENT OF THE ARMY SIGNAL CORPS ENGINEERING LABORATORIES, FINAL ASSY-RF, SM-D-248854, SHEET 1 OF 3 SHEETS, WHEN REFERRING TO THIS DRAWING STATE DRAWING NO., APPLICABLE ISSUE SYMBOL, IF ANY, AND DATE.

NOTE: THESE DIMENSIONS (DRAWING, SPECIFICATIONS, AND OTHER DATA) ARE TO BE USED FOR THE BUYER'S INFORMATION ONLY. THIS DRAWING IS NOT TO BE USED FOR THE CONSTRUCTION OF THE EQUIPMENT UNLESS IT IS APPROVED BY THE ENGINEERING DEPARTMENT OF THE ARMY. THE BUYER'S RESPONSIBILITY IS TO OBTAIN THE NECESSARY PERMISSIONS FROM THE ENGINEERING DEPARTMENT OF THE ARMY BEFORE ANY CONSTRUCTION OR MODIFICATION IS MADE TO THE EQUIPMENT. THE BUYER'S RESPONSIBILITY IS TO OBTAIN THE NECESSARY PERMISSIONS FROM THE ENGINEERING DEPARTMENT OF THE ARMY BEFORE ANY CONSTRUCTION OR MODIFICATION IS MADE TO THE EQUIPMENT.

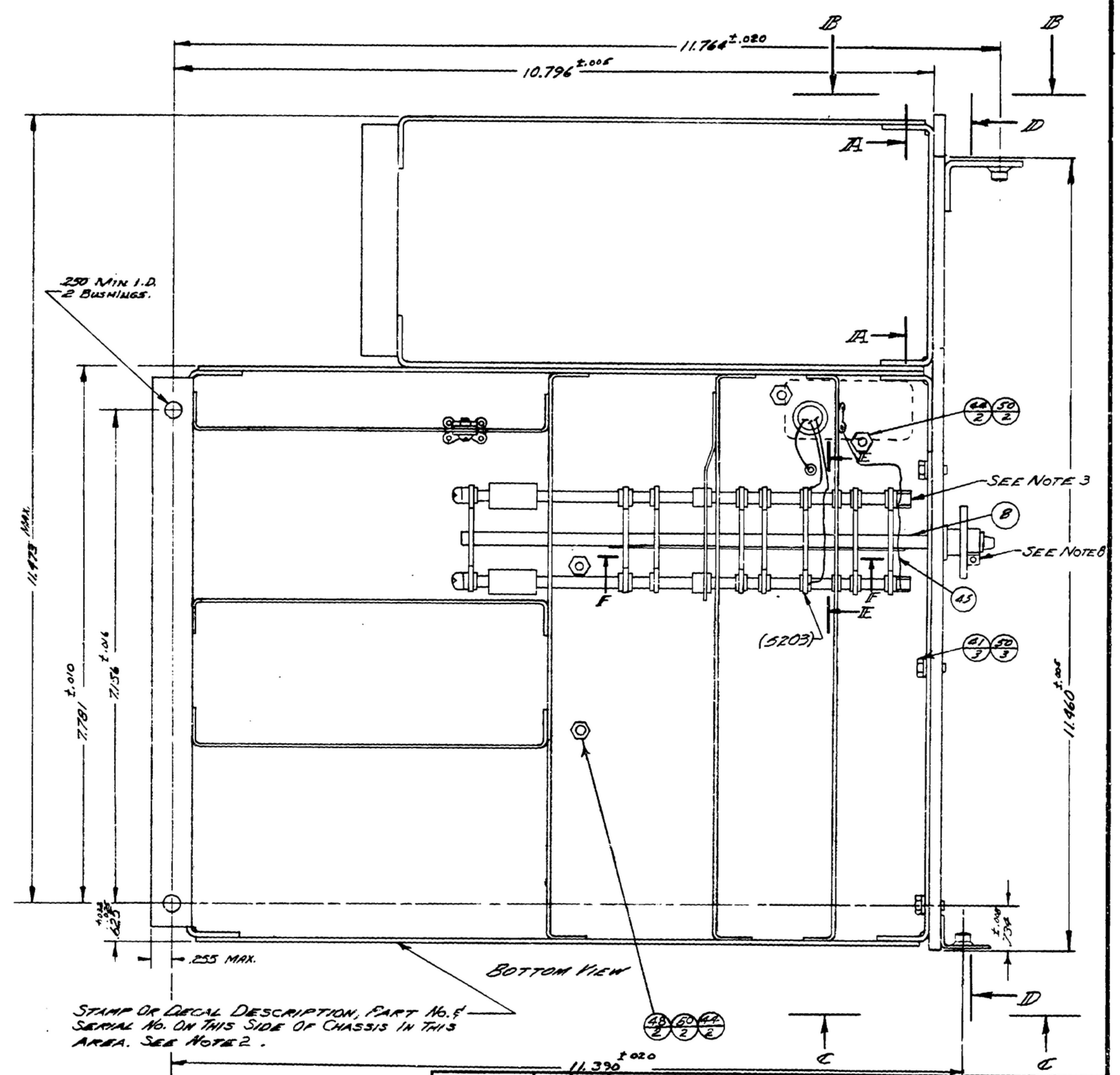
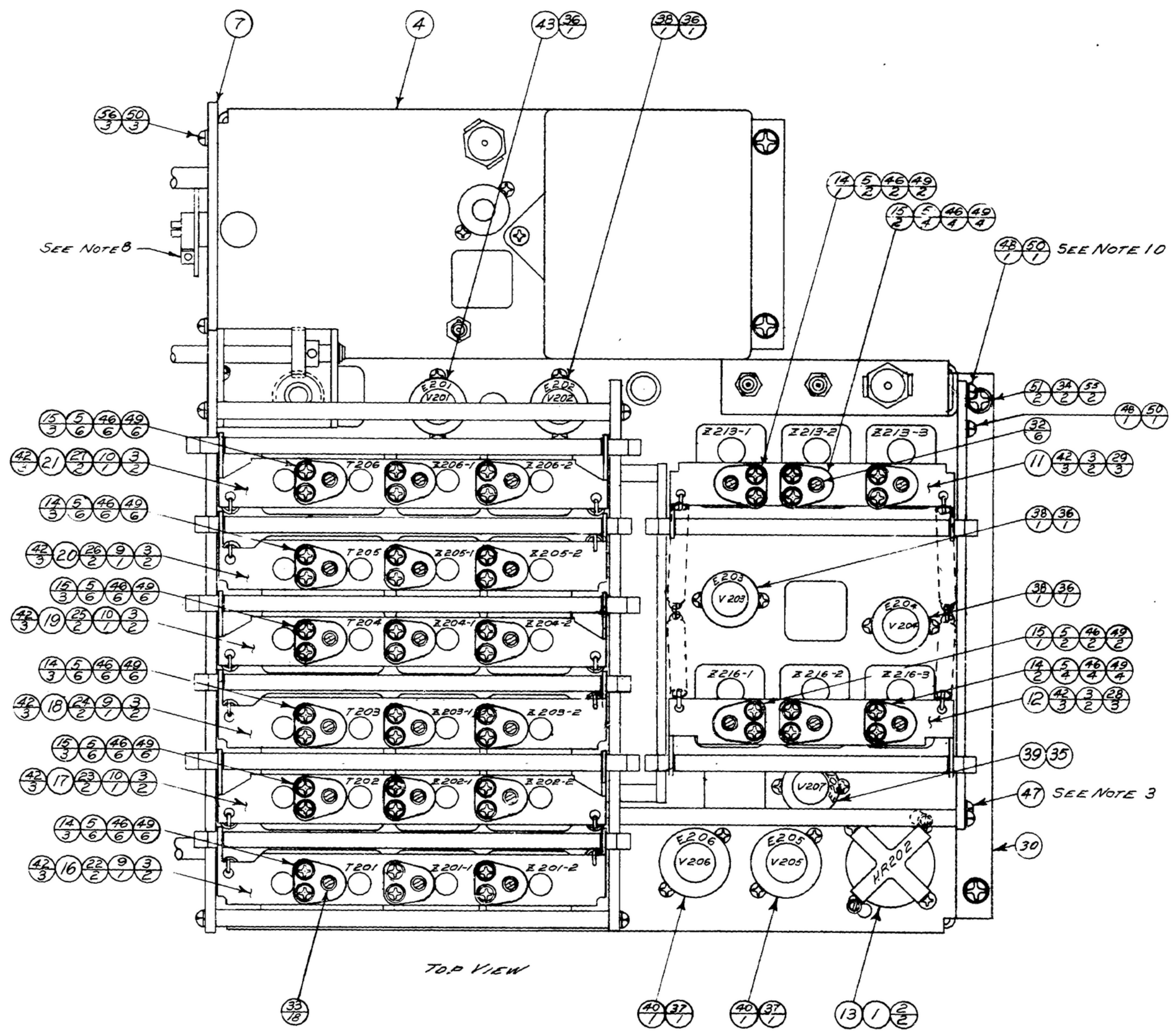
THIS DRAWING HAS BEEN PURCHASED BY THE BUYER'S INFORMATION ONLY. CONTRACTOR MAY AT HIS OPTION DEVIATE FROM THESE PROCESS DETAILS.

FOR INFORMATION ONLY. CONTRACTOR MAY AT HIS OPTION DEVIATE FROM THESE PROCESS DETAILS.

EQUIP. TYPE: R390A/BURR EXP. NO.

Col 510-7000-005

REVISIONS			
BY	DESCRIPTION	DATE	APPROVAL



LIST OF MATERIAL				DRAWING		APPROVED	
				EC5			
<p>UNLESS OTHERWISE SPECIFIED:</p> <p>FRACTIONAL DIMENSIONS INCLUDING HOLE SIZES MAY VARY ±.004</p> <p>MACHINED ANGLES MAY VARY ±.1°</p> <p>BROKEN ANGLES MAY VARY ±.004</p> <p>BROKEN ANGLES MAY VARY ±.1°</p> <p>ECCENTRICITY BETWEEN ANY DIAMETERS ON THE SAME CENTERLINE SHALL NOT EXCEED 0.10 TOTAL INDICATION READING</p> <p>ALL DIMENSIONS ARE FINISH DIMENSIONS INCLUDING APPLIED FINISH AND ARE GIVEN IN INCHES.</p>				<p>142 14 - PH - 51-93</p> <p>REVIEWED PME</p> <p>APPROVED HLY</p> <p>PME</p> <p>DATE 20 FEB 56</p>		<p>DEPARTMENT OF THE ARMY</p> <p>SIGNAL CORPS ENGINEERING LABORATORIES</p> <p>FORT MONMOUTH NEW JERSEY</p> <p>SM-D-248854</p> <p>SHEET 2</p>	
<p>APPLICATION</p>				<p>SCALE 1/1</p>			

WHEN REFERRING TO THIS DRAWING STATE DRAWING NO., APPLICABLE ISSUE SYMBOL, IF ANY, AND DATE

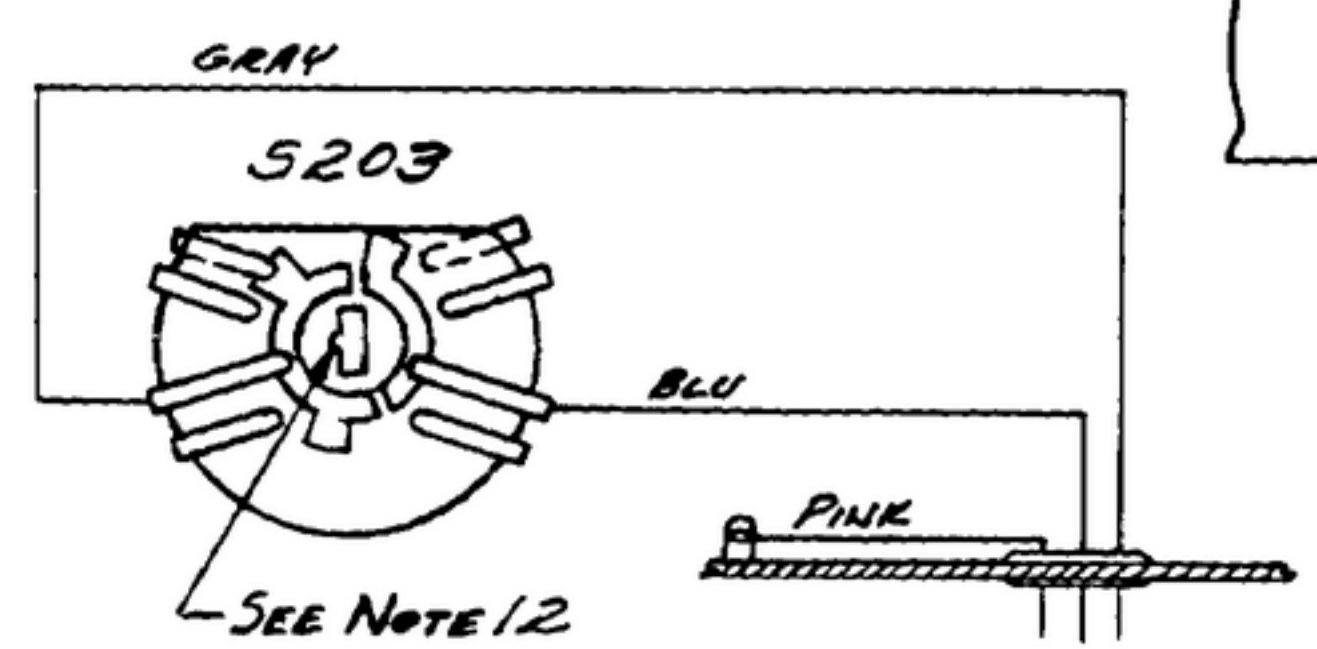
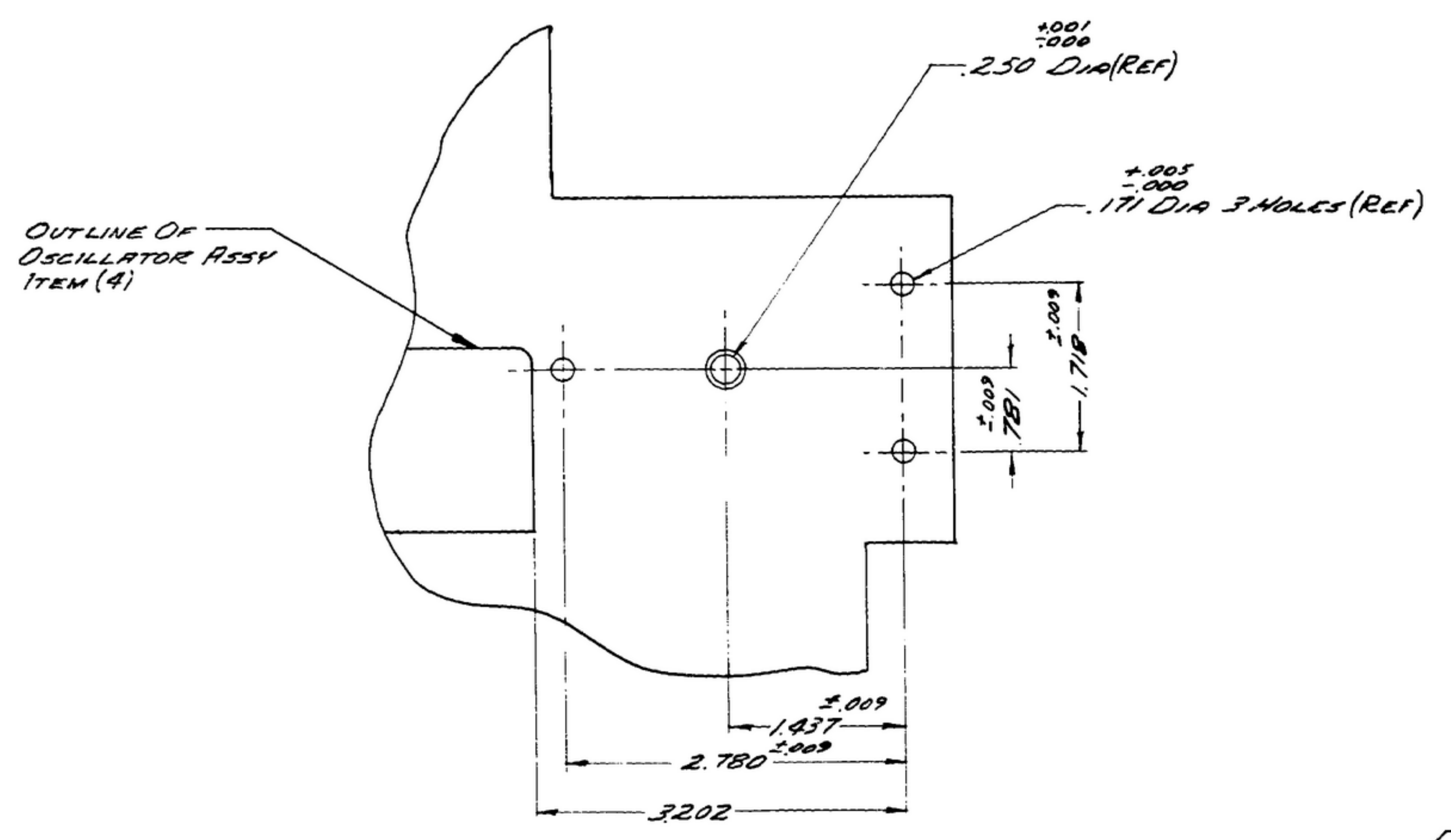
NOTICE: WHEN APPROVED DRAWING, SPECIFICATIONS, OR OTHER DATA ARE USED FOR ANY PURPOSE OTHER THAN IN CONNECTION WITH A CONTRACT, THE DRAWING CONTRACTOR ASSUMES RESPONSIBILITY FOR ANY OBLIGATIONS, LIABILITIES, AND RISKS THAT MAY BE INCURRED BY THE USER. THIS DRAWING IS NOT TO BE REPRODUCED OR TRANSMITTED IN ANY FORM OR BY ANY MEANS, ELECTRONIC OR MECHANICAL, INCLUDING PHOTOCOPYING, RECORDING, OR BY ANY INFORMATION STORAGE AND RETRIEVAL SYSTEM, WITHOUT PERMISSION IN WRITING FROM THE DRAWING CONTRACTOR.

THIS DRAWING IS THE PROPERTY OF THE DRAWING CONTRACTOR AND MAY BE REPRODUCED AND USED IN CONNECTION WITH ANY CONTRACT ONLY BY THE USER OF THIS DRAWING. THE DRAWING CONTRACTOR ASSUMES RESPONSIBILITY FOR ANY OBLIGATIONS, LIABILITIES, AND RISKS THAT MAY BE INCURRED BY THE USER. THIS DRAWING IS NOT TO BE REPRODUCED OR TRANSMITTED IN ANY FORM OR BY ANY MEANS, ELECTRONIC OR MECHANICAL, INCLUDING PHOTOCOPYING, RECORDING, OR BY ANY INFORMATION STORAGE AND RETRIEVAL SYSTEM, WITHOUT PERMISSION IN WRITING FROM THE DRAWING CONTRACTOR.

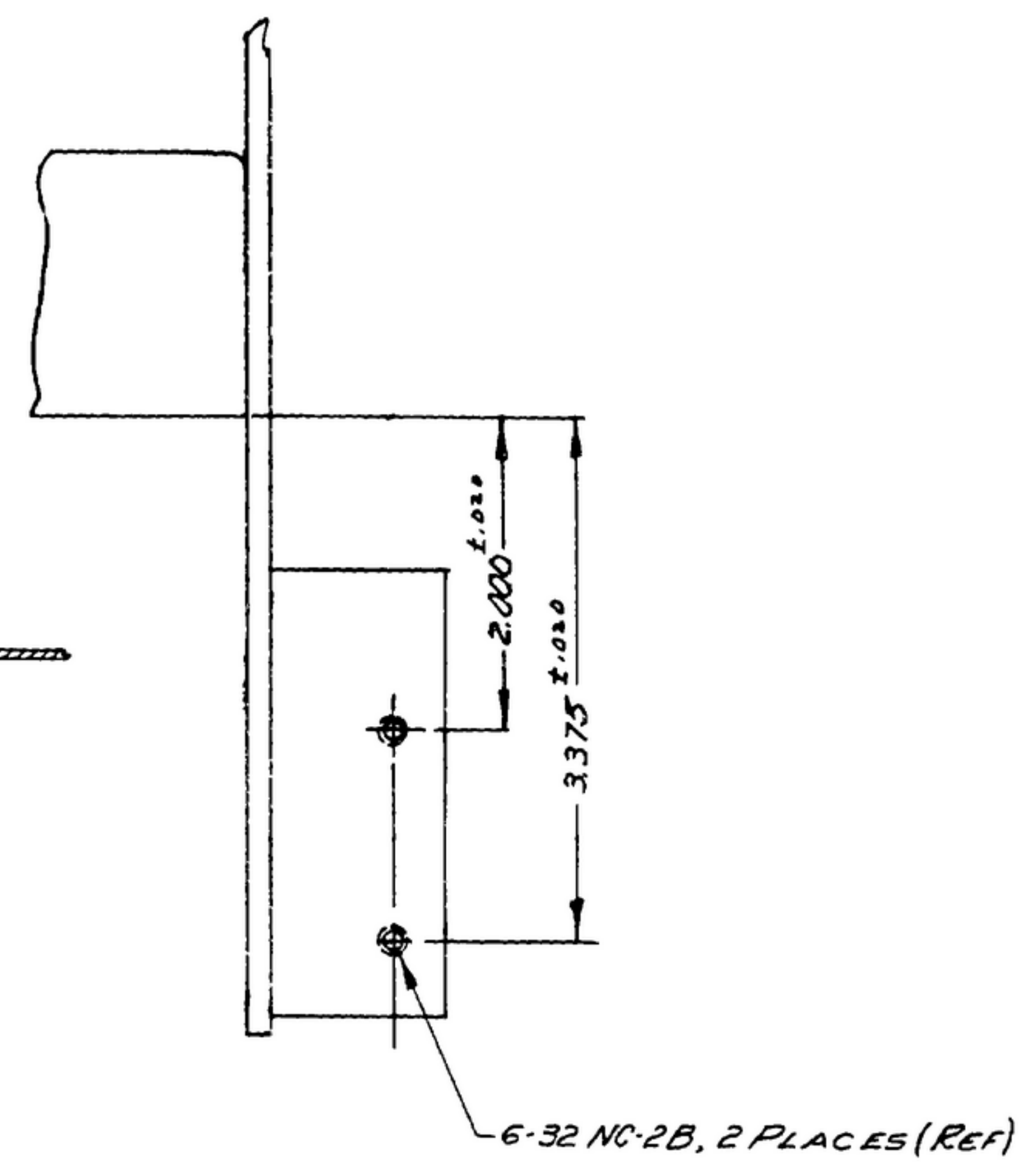
*FOR INFORMATION ONLY. CONTRACTOR MAY AT HIS OPTION DEVIATE FROM THESE PROCESS DETAILS.

REVISIONS			
SYM	DESCRIPTION	DATE	APPROVAL

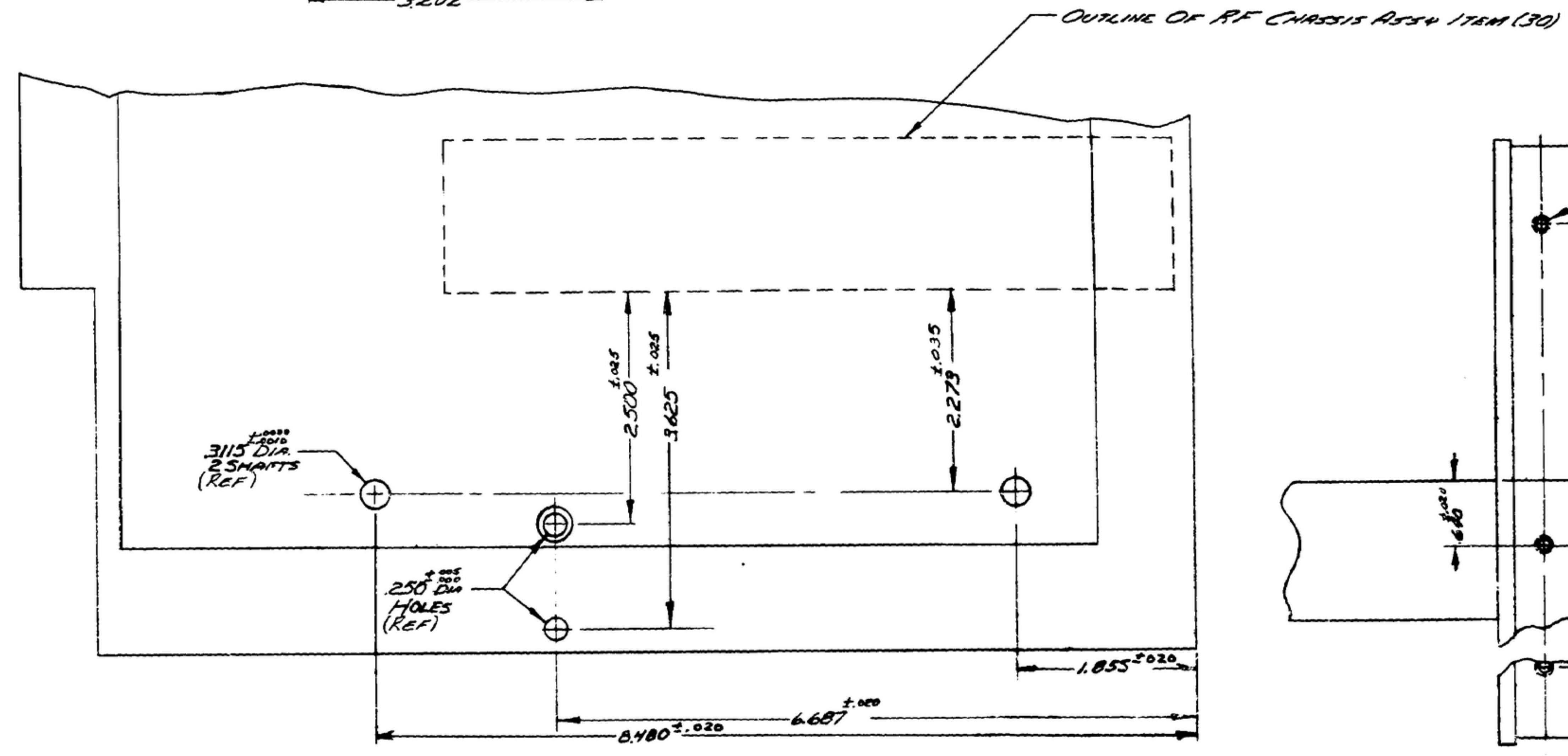
VIEW A-A
ROTATED 90° CCW
(DIMENSIONS TO BE GAGED BEFORE ASSY OF XTAL OSC (4) TO R.F. UNIT.)



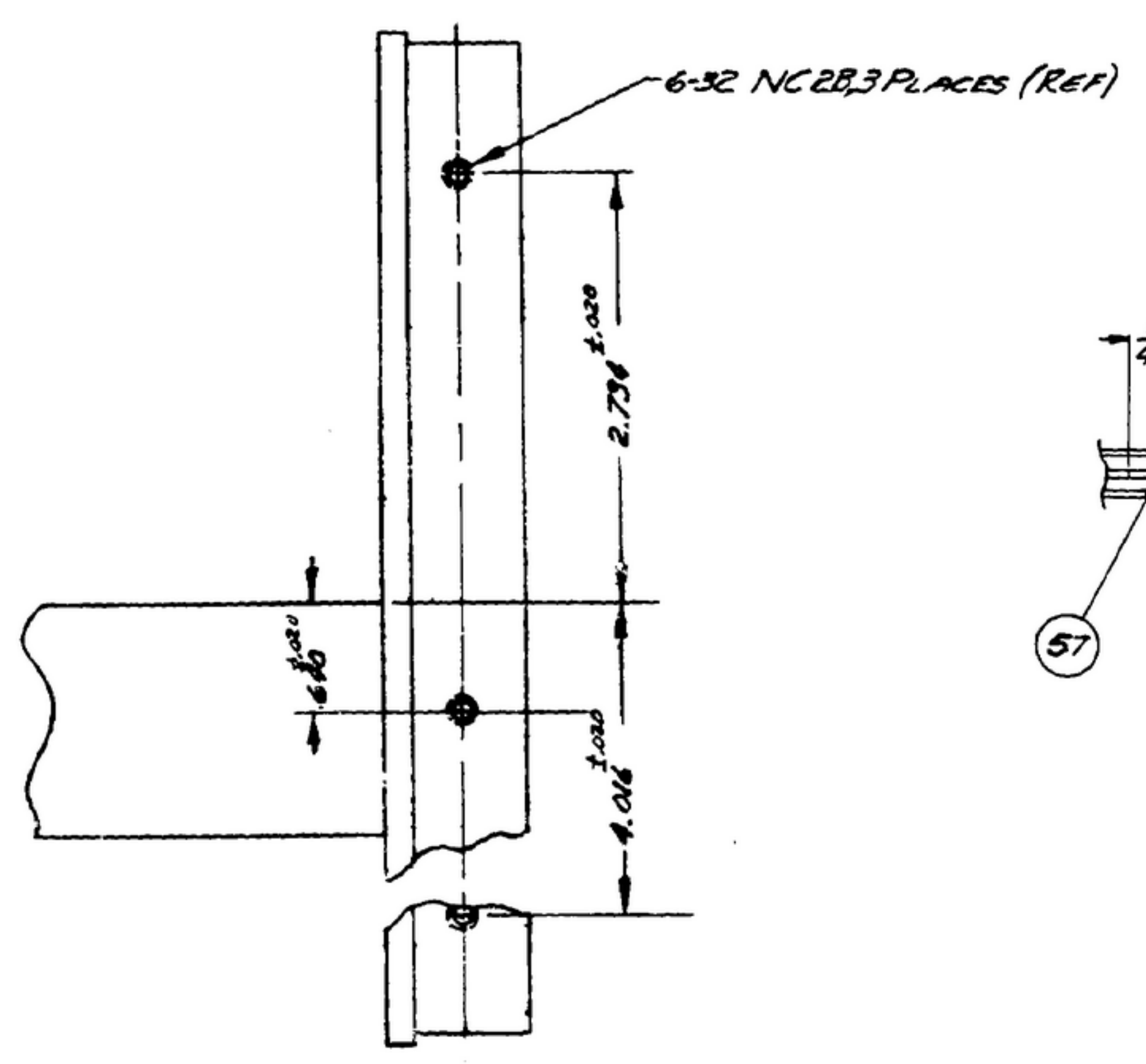
SWITCH POSITION AT 7.000 MC AS VIEWED FROM DRIVEN END.
VIEW E-E
ROTATED 90° CW



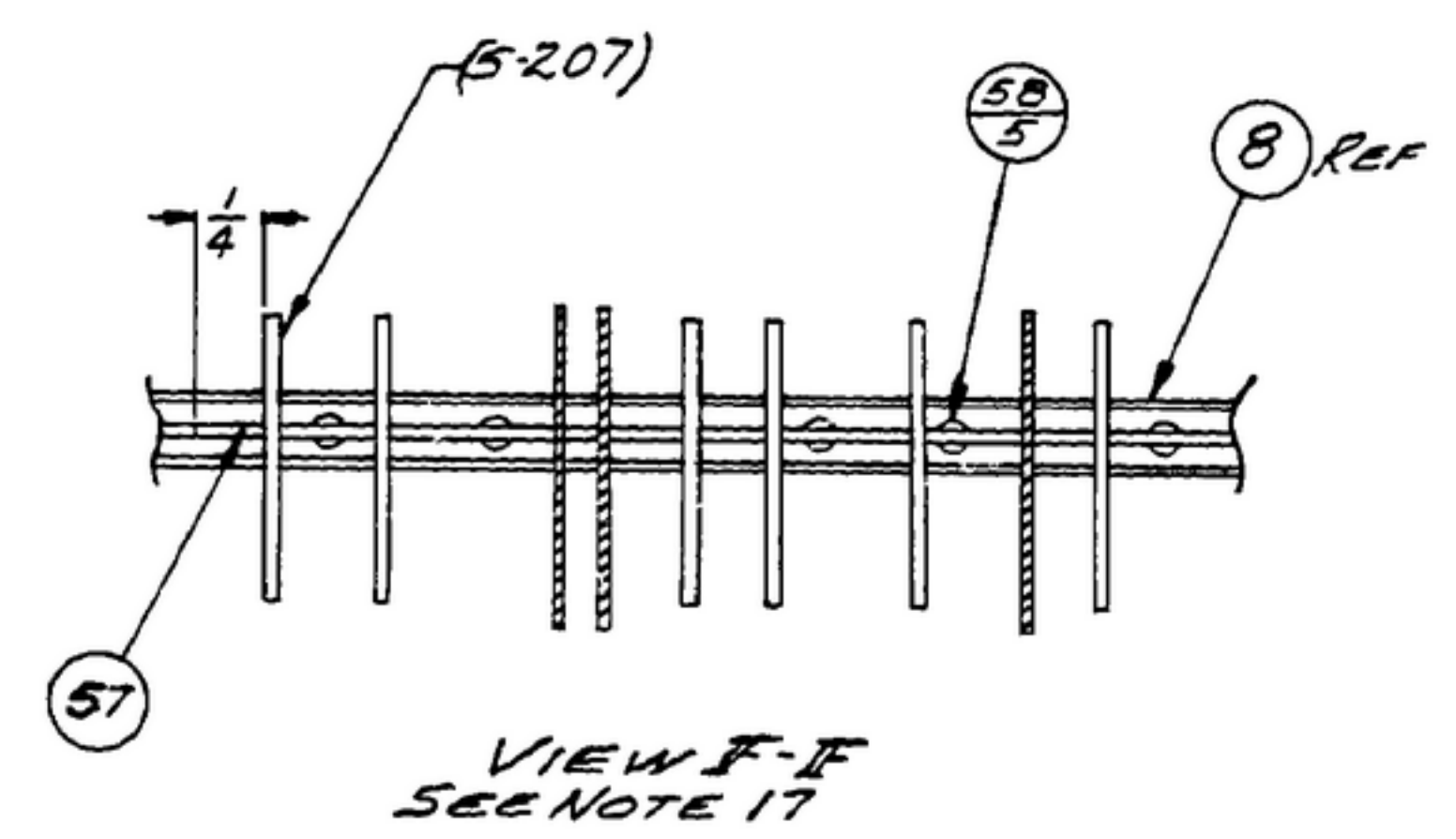
VIEW B-B



VIEW D-D
ROTATED 90° CCW



VIEW C-C



VIEW F-F
SEE NOTE 17

REVISED PART NO.	REV.	ISSUED	ISSUED BY	DESCRIPTION	DATE	DATE OF REV.

LIST OF MATERIAL

<p>COLLINS PART NO. 558-0452-000</p> <p>558-0452-000 / SM-D-249M09C-DL-248775</p> <p>COLLINS NO. 5774 NEXT ASST USED ON</p> <p>APPLICATION</p>	<p>DRAWN ECS</p> <p>CHECKED <i>Plan</i></p> <p>APPROVED</p> <p>UNLESS OTHERWISE SPECIFIED: DECIMAL DIMENSIONS INCLUDING HOLE DIAM MAY VARY ±.005 FRACTIONAL DIMENSIONS INCLUDING HOLE DIAM MAY VARY ±1/64 BEARING ANGLES MAY VARY ±1° BEARING ANGLES MAY VARY ±1° BROKEN ANGLES MAY VARY ±1° CONCENTRICITY BETWEEN ANY DIAMETERS ON THE SAME CENTERLINE SHALL NOT EXCEED ONE TOTAL FUNCTION READING. ALL DIMENSIONS ARE GIVEN DIMENSIONS INCLUDING APPLIED FINISH AND ARE GIVEN IN INCHES.</p>	<p>COLLINS PART NO. 1421A-PH-51-93</p> <p>SIGNAL CORPS</p> <p>REVIEWED PME</p> <p>APPROVED HLY PME</p> <p>DATE 20 FEB 56 SCALE 1/1</p>	<p>FINAL ASSY - R.F.</p>	<p>DEPARTMENT OF THE ARMY SIGNAL CORPS ENGINEERING LABORATORIES</p> <p>FORT MONMOUTH NEW JERSEY</p> <p>SM-D-248854 SHEET 3</p>
--	---	--	--------------------------	---